

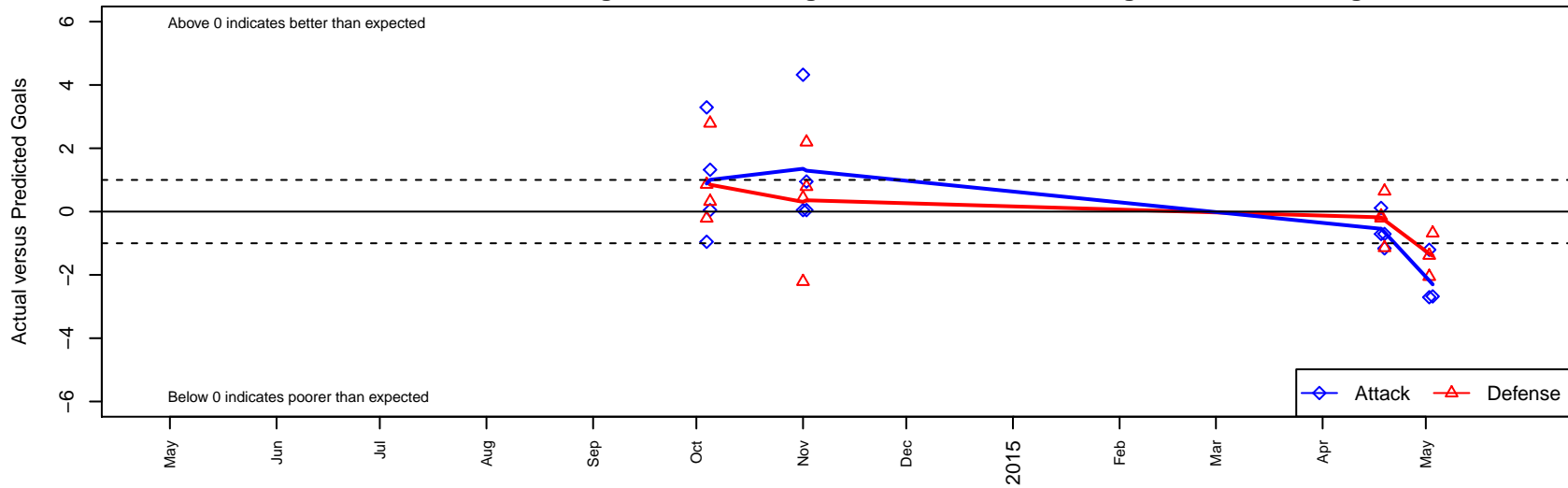
Jackson Hole United Black B03

, WY
 B03 total strength=484
 attack=0.48 defense=0.23

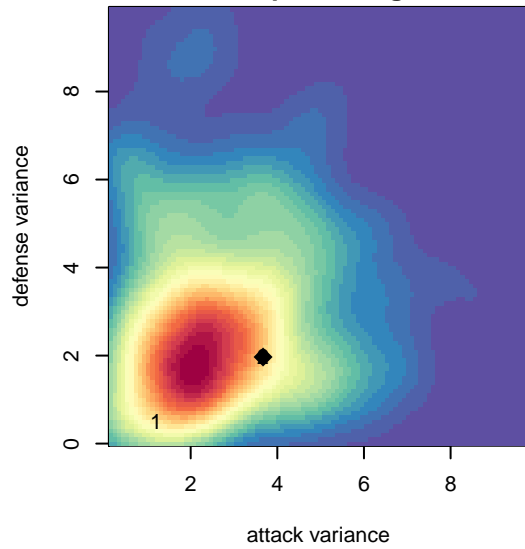
alt names used:
 JACKSON HOLE UNITED BLACK (WY)
 JACKSON HOLE UNITED03-04B BLACK
 JACKSON HOLE UNITED BLACK (WY)
 JACKSON HOLE UNITED BLACK (WY)

Venues played:
 2014 GEM State Challenge U11B Silver West l
 2014 FC Nova Fall Showcase U11B King
 2014 PVSC Spring Classic BU11 U11
 2014 Canyon Rim Classic U11 B U11

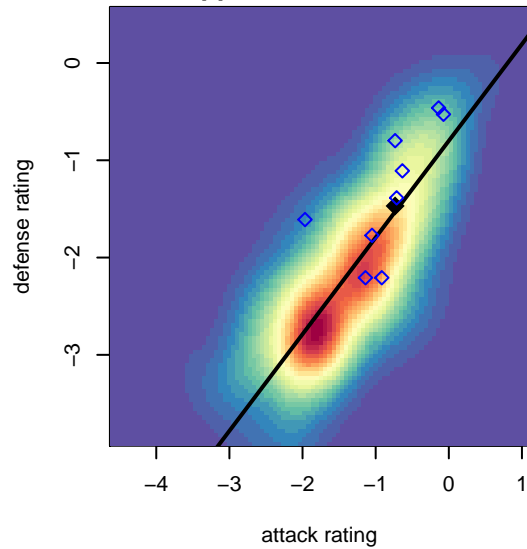
Jackson Hole United Black B03
 Dots are actual minus expected GF (blue circles) and GA (red triangles).
 Blue line is smoothed change in attack strength. Red is smoothed change in defense strength.



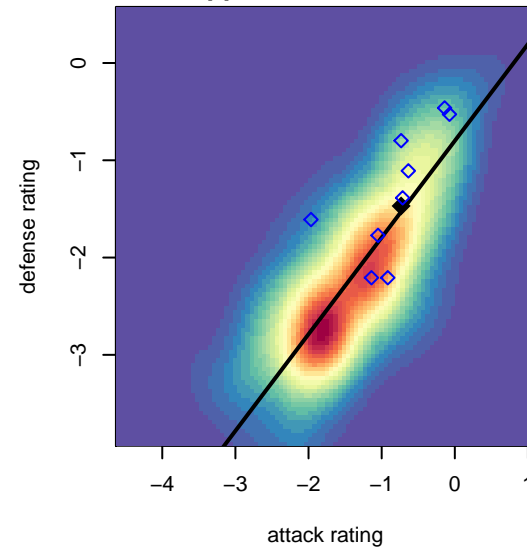
**attack and defense variance (black dot)
relative to other teams
and top 10 in region**



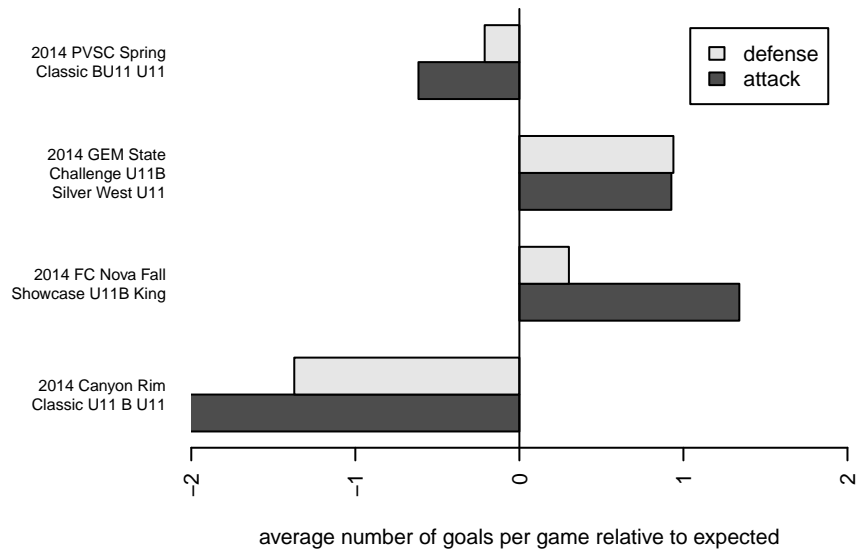
**attack and defense rating
relative to others at age
and all opponents in last 13 months**



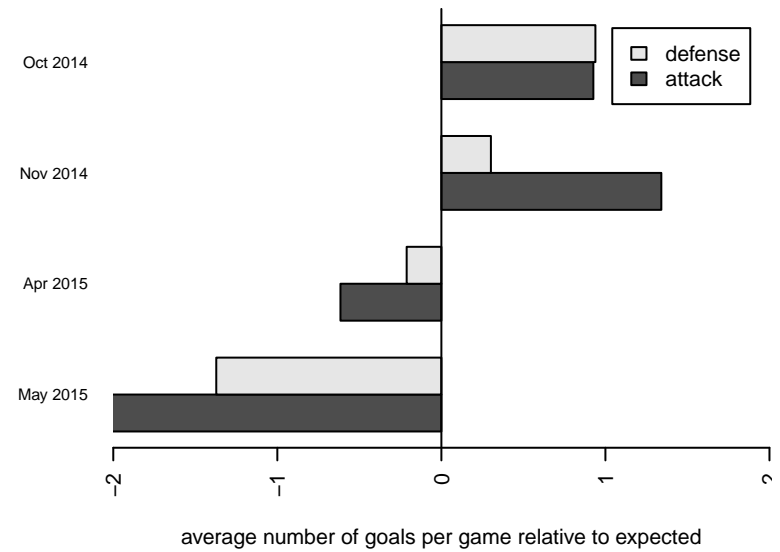
**attack and defense rating
relative to others at age
and all opponents in last 13 months**



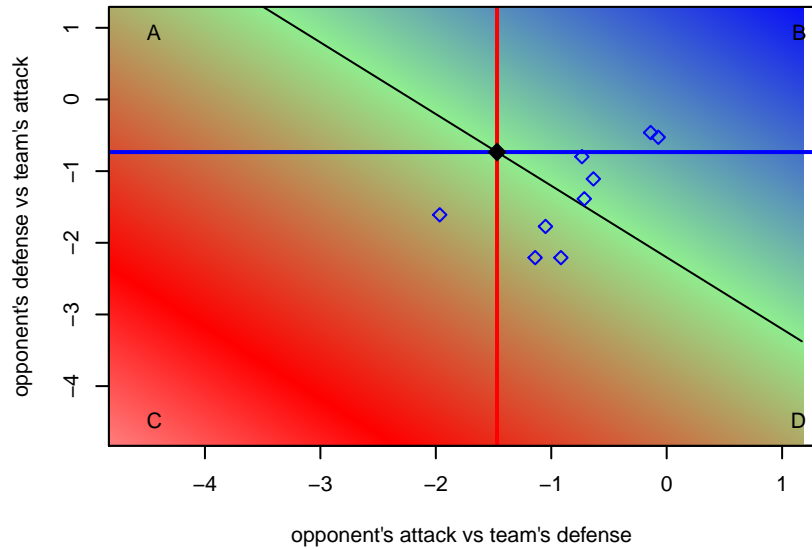
Performance relative to 13 month average



Performance relative to 13 month average



Distribution of opponents
 Red = Lose zone, Blue = Win zone, Green = Even
 Black line separates win/lose zones



lot. A=Neither has attack advantage, B=Opponent has both attack and defense advantage, C=Opponent has both attack and defense disadvantage, D=Both have

| date | home | | away | | venue | pred.home | pred.away |
|-------------|-------------------------------|----|-------------------------------|---|--|------------------|------------------|
| 2015-05-03 | Jackson Hole United Black B03 | 1 | NWSC Sharks B03 | 2 | 2014 Canyon Rim Classic U11 B U11 | 3.68 | 1.32 |
| 2015-05-02 | Jackson Hole United Black B03 | 0 | Canyon Optimist Inferno B03 | 3 | 2014 Canyon Rim Classic U11 B U11 | 1.21 | 1.62 |
| 2015-05-02 | Jackson Hole United Black B03 | 3 | Sawtooth United B03 | 3 | 2014 Canyon Rim Classic U11 B U11 | 5.71 | 0.95 |
| 2015-04-19 | Jackson Hole United Black B03 | 2 | PVSC United Younis B03 | 0 | 2014 PVSC Spring Classic BU11 U11 | 3.16 | 0.64 |
| 2015-04-19 | Twin Falls Rapids B03 | 3 | Jackson Hole United Black B03 | 2 | 2014 PVSC Spring Classic BU11 U11 | 1.86 | 2.71 |
| 2015-04-18 | Jackson Hole United Black B03 | 2 | Twin Falls Rapids B03 | 2 | 2014 PVSC Spring Classic BU11 U11 | 2.71 | 1.86 |
| 2015-04-18 | Jackson Hole United Black B03 | 2 | Jackson Hole United White B03 | 2 | 2014 PVSC Spring Classic BU11 U11 | 1.89 | 1.79 |
| 2014-11-02 | Idaho Rush Black B03 | 1 | Jackson Hole United Black B03 | 2 | 2014 FC Nova Fall Showcase U11B King | 3.19 | 1.05 |
| 2014-11-02 | Idaho Rush White B03 | 2 | Jackson Hole United Black B03 | 1 | 2014 FC Nova Fall Showcase U11B King | 2.79 | 0.95 |
| 2014-11-01 | Jackson Hole United Black B03 | 1 | Idaho Rush White B03 | 5 | 2014 FC Nova Fall Showcase U11B King | 0.95 | 2.79 |
| 2014-11-01 | Jackson Hole United Black B03 | 10 | FC Nova Grey B03 | 1 | 2014 FC Nova Fall Showcase U11B King | 5.68 | 1.44 |
| 2014-10-05 | Jackson Hole United Black B03 | 5 | NWSC Sharks B03 | 1 | 2014 GEM State Challenge U11B Silver Wes | 3.68 | 1.32 |
| 2014-10-05 | Idaho Rush White B03 | 0 | Jackson Hole United Black B03 | 1 | 2014 GEM State Challenge U11B Silver Wes | 2.79 | 0.95 |
| 2014-10-04 | Jackson Hole United Black B03 | 6 | Twin Falls Rapids B03 | 1 | 2014 GEM State Challenge U11B Silver Wes | 2.71 | 1.86 |
| 2014-10-04 | Jackson Hole United Black B03 | 0 | Idaho Rush White B03 | 3 | 2014 GEM State Challenge U11B Silver Wes | 0.95 | 2.79 |